

KWANTLEN POLYTECHNIC UNIVERSITY



Discover
WHAT IS POSSIBLE

INTERNATIONAL VIEWBOOK 2022-23
METRO VANCOUVER, BC CANADA 🇨🇦

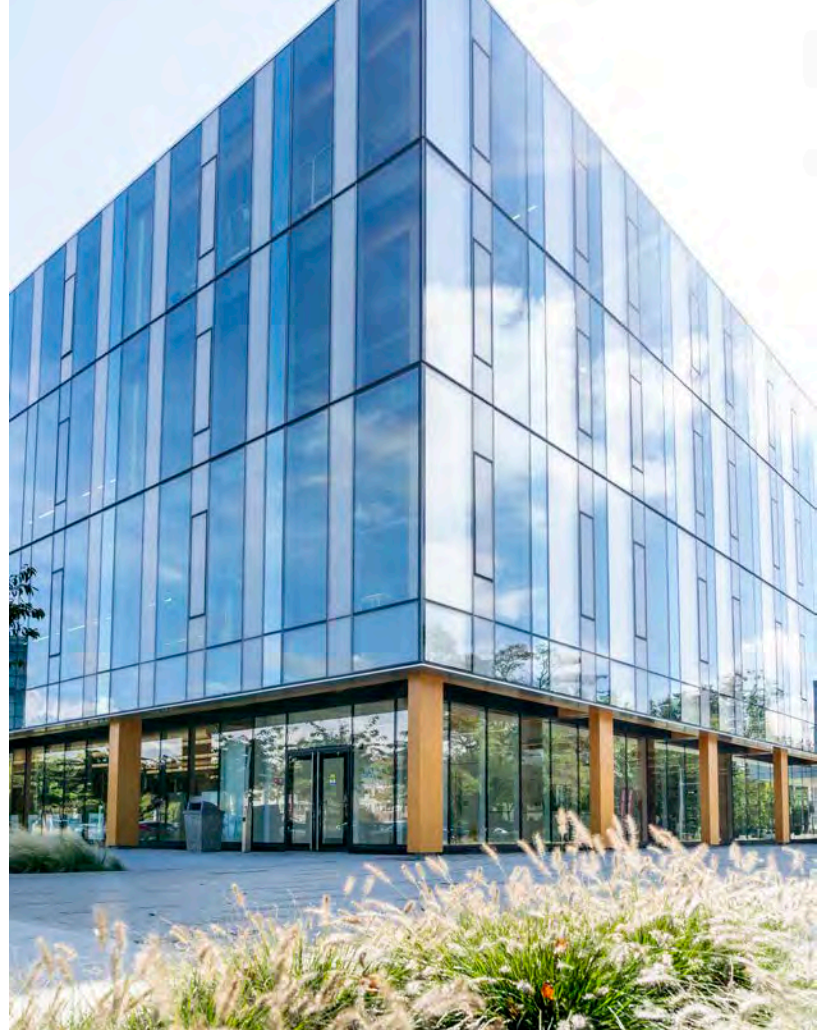
Kwantlen Polytechnic University

We're Canada's only polytechnic university. We're unique. So are you.

Begin your journey at KPU. The university is committed to supporting students like you every step of the way, from application to graduation. Discover a wealth of possibilities and connect with other students, instructors, international advisors, and industry leaders as you pursue your passions and launch your career. It all happens at KPU: where thought meets action.

Table of Contents

- 4 Metro Vancouver
- 6 Campuses
- 8 The Polytechnic Advantage
- 10 Life at KPU
- 11 Student Support Services
- 12 Faculties & Programs
- 14 Credentials Offered
- 16 Undergraduate Programs
- 18 Post-Baccalaureate & Graduate Programs
- 19 Laddering Opportunities
- 20 Admission Requirements
- 21 English Proficiency Requirements
- 22 KPU Pathway
- 24 Program Details
- 32 Tuition & Scholarships
- 34 Zero Textbook Costs
- 35 Ready to Apply?



Discover what is possible. Discover KPU.

We discovered a lot last year.

We discovered how to teach, work, and study online.

We discovered challenges and hurdles.

And we discovered we're almost always on mute.

It was hard. But we discovered a lot of positives, too.

Through the COVID-19 pandemic, we discovered our **adaptability**, our **resilience**, our **creativity**. We discovered a stronger sense of collaboration and community. We discovered how to connect and celebrate virtually. We discovered a wealth of new possibilities for our students, grads, faculty, and staff. And we discovered we're more ready than ever before to get back to campus.



7

faculties & schools



140+

diverse programs



Nearly
20,000

students annually

95%



employment rate for KPU
degree graduates in the
work force¹

¹Graduates surveyed in 2020.

35



Maximum undergraduate
class size of students

(max class size of 17 students in English
Language Studies courses)



International full-time tuition per
semester starts at only

\$6,701 \$3,840

(academic courses)

(english upgrading)

Have a question?

The KPU International Office is here to help you on your journey to becoming a KPU student. Connect with us today to:

- » Learn more about programs and courses
- » Get info about tuition and scholarships
- » Start your application

 **mykpu**
international@kpu.ca
604.599.2866
kpu.ca/international



Metro Vancouver

Imagine studying by the beach, grabbing coffee with a friend downtown, and going hiking in some of Canada's most breathtaking national parks—all on the same day. That's life here in Metro Vancouver. No wonder over 150,000 international students like you are studying in Metro Vancouver and other parts of British Columbia! So whether you feel energized by the buzz of a big city or love exploring the beauty of the great outdoors, we know you'll love it here.

Welcome to your new home.



#1 in Canada for
QUALITY OF LIVING²

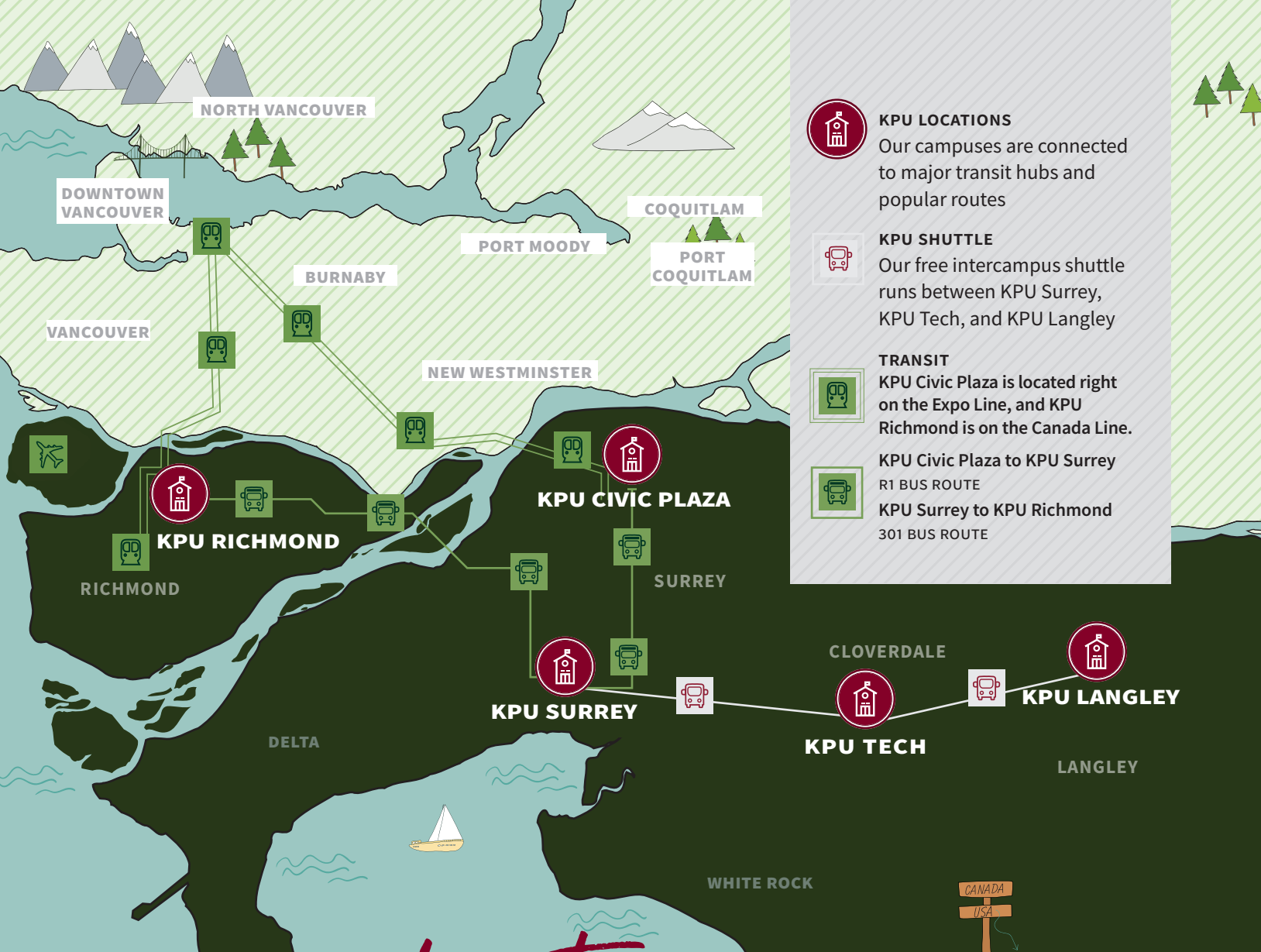


2.4 Million
Residents³



The province with
the **LOWEST**
UNEMPLOYMENT
RATE⁴

1. Source: "International Students in BC's Education Systems," 2018. <https://www2.gov.bc.ca/assets/gov/education/post-secondary-education/data-research/stp/stp-international-research-results.pdf> 2. Source: Mercer Quality of Living Rankings, 2019 <https://mobilityexchange.mercer.com/Insights/quality-of-living-rankings> 3. Source: Statistics Canada. 2017. Vancouver [Census metropolitan area], British Columbia and British Columbia [Province] (table). Census Profile. 2016 Census. <https://www12.statcan.gc.ca/census-recensement/2016/dp-pd/prof/index.cfm?Lang=E>. 4. Source: TD Canada, Provincial Economic Forecast. <https://economics.td.com/provincial-economic-forecast>



» Wilson School Of Design



» Surrey Library



» KPU Tech



» Solar Greenhouse Dome

Campus *Locations*

KPU's five campuses are strategically situated in central locations across Metro Vancouver, so you're never far from accessing the services that you need.

KPU SURREY

Often known as the main campus, students come to KPU Surrey to study a variety of science, art, and business programs, and more.

KPU RICHMOND

Located just 15 minutes away from the city of Vancouver, this convenient campus is home to the internationally renowned Wilson School of Design and unique programs like acupuncture and agriculture.

Want to see? Check out our campus virtual tours!
kpu.ca/future-students

KPU CIVIC PLAZA

Newly opened in 2019! KPU Civic Plaza is a sleek and modern campus in downtown Surrey that's dedicated to post-baccalaureate and graduate level studies.

KPU LANGLEY

This massive campus has a variety of unique facilities, including brewing labs, greenhouses, and music studios.

KPU TECH

Students gain hands-on experience at the auto shop, farrier barns, and assorted trades workshops available at this specialty trades and technology campus in the Cloverdale area of Surrey.

Our *places & spaces*

From our libraries to fitness centres, KPU has the facilities and equipment you'd expect in a modern university—and some that might surprise you.

- » Brewery and brewing lab at KPU Langley
- » Renovated and expanded art and science spaces at KPU Surrey
- » Wilson School of Design at KPU Richmond featuring high-tech equipment like a seam sealer, laser cutter, ultrasonic sewing machine and more
- » Workshops and barns that support our trades programs, farrier science, and apprenticeships at KPU Tech
- » Space for business courses and professional development at KPU Civic Plaza
- » Greenhouses and field space dedicated to science and horticulture programs
- » Cognition lab at KPU Surrey
- » Farmlands in Richmond and the Tsawwassen First Nation that support our farm school partnerships
- » Mechatronics lab at KPU Tech
- » Applied Genomics Centre at KPU Surrey
- » Simulation technology in our health programs at KPU Langley

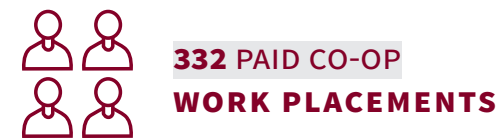
kpu.ca/campuses

The polytechnic advantage

Some universities focus only on theory and textbooks, but KPU is different. As Canada's only polytechnic university, we're uniquely positioned to give you the opportunities to **learn through hands-on experience** while still providing top quality classroom learning. KPU prepares you for the future you want by helping you graduate with the skills and experience you need.

Work Integrated Learning Opportunities at a Glance

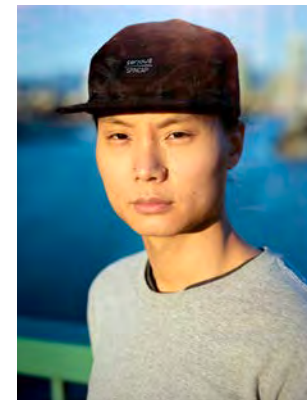
Based on the 2019/2020 academic year



2,052 STUDENTS IN STUDIO AND LAB COURSES

kpu.ca/experiential

OUR GRADS SAY:



"The hands-on experience at KPU amplified my abilities to succeed in every aspect of my life - whether it is creating dance art or working in non-profits."

Victor Tran

Policy Studies & Language and Cultures Grad

OUR STUDENTS SAY:

"I went into my first co-op term not knowing what I was walking into because of the pandemic. No one was prepared for how this would impact them but it's been a priceless opportunity to see people tackle every hurdle with so much drive. It's truly inspiring."

Farah Elahwal

Humans Resources Management



» Fashion Design And Technology



» Mechatronics



» Seed Lab



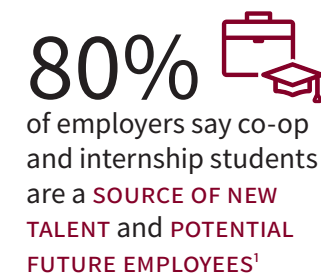
» Brew Lab



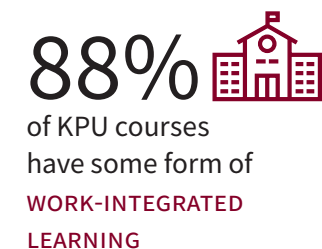
» Biology

REAL WORLD LEARNING

Hone your skills in the classroom, then get out into the real world through programs like co-op, study abroad, and more.



¹<https://www.univcan.ca/universities/facts-and-stats/>



kpu.ca/co-op

Life at *kpu*



University isn't just about books.

It's also about meeting new people, trying different things, and exploring who you want to become. At KPU, we make it easy to do all that. We've got an exciting student community that will welcome you with open arms to Canadian campus life.



Volunteer or work on campus



Join the Kwantlen Student Association



Stay active with Sport and Recreation



Discover 20+ student clubs and societies



Make friends at events hosted by International Student Life



OUR STUDENTS SAY:



"The most enjoyable part of the program was connecting with new people. Every day, I was very happy to know that I am able to help students when they are studying in their home countries. I was able to share my international student experience with them. It made [things] really easy for me to connect with them and provide support."

Harpreet Brar

International student and mentor in the International Peer Mentorship program

Student support services

Moving abroad for your studies can be scary, but it doesn't have to be difficult. KPU has over 30 student support services, and they're all here to assist you as you work towards your academic, professional, and personal goals! No matter what you're facing, you'll always find someone who can help.

KPU INTERNATIONAL

kpu.ca/international

Your home base! Come visit our friendly offices at any time for support.

INTERNATIONAL STUDENT ADVISORS

kpu.ca/international/advising

Dedicated to helping you through any academic and non-academic issues you may encounter.

THE LEARNING CENTRES

kpu.ca/tlc

Free tutoring and academic support to help you ace your courses.

COUNSELLING SERVICES

kpu.ca/counselling

When you need someone to talk to. Services available 24/7!

ORIENTATION & TRANSITION

kpu.ca/orientation

Helping you settle in to life in Canada and at KPU.

CAREER DEVELOPMENT SERVICES

kpu.ca/careercentre

Landing you that dream job.

Areas of *study*

With seven faculties and over 140 programs, there's something for everyone at KPU.

ACADEMIC AND CAREER PREPARATION

- » English Language Proficiency, *Diploma*
- » Pathway to Undergraduate Studies

kpu.ca/acp

ARTS

- » Anthropology, *Bachelor of Arts, Associate of Arts*
- » Arts, *Diploma, Certificate*
- » Asian Studies, *Bachelor of Arts, Associate of Arts*
- » Creative Writing, *Bachelor of Arts, Associate of Arts*
- » Criminology, *Bachelor of Arts*, Associate of Arts, Diploma, Certificate*
- » Education Assistant, *Certificate*
- » English, *Bachelor of Arts, Associate of Arts*
- » Fine Arts, *Bachelor of Fine Arts, Visual Arts, Diploma, Certificate*
- » General Studies, *Bachelor of Arts, Associate of Arts, Diploma*
- » Geography, Applied, *Bachelor of Arts*
- » Geography, *Associate of Arts*
- » History, *Bachelor of Arts, Associate of Arts*
- » Journalism, *Bachelor of Journalism*
- » Non-Governmental Organizations and Nonprofit Studies, *Certificate*
- » Philosophy, *Bachelor of Arts, Associate of Arts*
- » Policy Studies, *Bachelor of Arts*
- » Political Science, *Bachelor of Arts, Associate of Arts*
- » Psychology, *Bachelor of Applied Arts, Bachelor of Arts, Bachelor of Science, Associate of Arts*
- » Sociology, *Bachelor of Arts, Associate of Arts*
- » Sustainable Food Systems and Security, *Graduate Certificate*

kpu.ca/arts

Programs marked with * offer co-op opportunities

See program details on page 24.

BUSINESS

- » Accounting, *Post-Baccalaureate Diploma, Bachelor of Business Administration*, Diploma, Certificate*
- » Business Administration, *Diploma*
- » Business Management, *Diploma*
- » Computer Information Systems, *Diploma*, Certificate*
- » Economics, *Associate of Arts*
- » Entrepreneurial Leadership, *Bachelor of Business Administration**
- » General Business Studies, *Diploma, Certificate*
- » Global Business Management, *Graduate Diploma in Business Administration*
- » Green Business Management and Sustainability, *Graduate Diploma in Business Administration*
- » Human Resources Management, *Post-Baccalaureate Diploma*, Bachelor of Business Administration**
- » Information Technology, *Bachelor of Technology**
- » Legal Administrative Studies, *Certificate*
- » Marketing Management, *Bachelor of Business Administration*, Diploma**
- » Operations and Supply Chain Management, *Post-Baccalaureate Diploma**
- » Public Relations, *Diploma**
- » Technical Management and Services, *Post-Baccalaureate Diploma*

kpu.ca/business

DESIGN

- » Fashion and Technology, *Bachelor of Design, Diploma*
- » Fashion Marketing, *Diploma*
- » Foundations in Design, *Certificate*
- » Graphic Design for Marketing, *Bachelor of Design*
- » Interior Design, *Bachelor of Interior Design*
- » Product Design, *Bachelor of Design*
- » Technical Apparel Design, *Post-Baccalaureate Diploma*

kpu.ca/design

HEALTH

- » Traditional Chinese Medicine – Acupuncture, *Diploma*

kpu.ca/health

SCIENCE AND HORTICULTURE

- » Biology, *Bachelor of Science*
- » Brewing & Brewery Operations, *Diploma*
- » Computer Aided Design and Drafting, *Diploma*, Certificate, Citation*
- » Engineering First-Year, *Certificate*
- » Environmental Protection Technology, *Diploma**
- » General Science, *Associate of Science, Diploma*
- » Health Science, *Bachelor of Science*
- » Horticulture Technology, *Diploma*
- » Horticulture Technology, Landscape Horticulture Systems Specialization, *Diploma*
- » Horticulture Technology, Sustainable Production Horticulture Specialization, *Diploma*
- » Horticulture Technology, Turf Management Specialization, *Diploma*
- » Mathematics, *Bachelor of Science, Associate of Science*
- » Physics for Modern Technology, *Bachelor of Science*
- » Plant Health, *Bachelor of Science*
- » Sustainable Agriculture, *Bachelor of Applied Science*
- » Urban Ecosystems, *Bachelor of Horticulture Science*

kpu.ca/science-hort

TRADES AND TECHNOLOGY

- » Appliance Servicing, *Certificate*
- » Mechatronics and Advanced Manufacturing Technology, *Diploma, Certificate*

kpu.ca/trades



What can I *graduate* with?

<p>CERTIFICATE</p> <p>🕒 6 – 12 Months</p> <p>🎓 30 Credits</p>	<p>DIPLOMA</p> <p>🕒 2 Years</p> <p>🎓 60 Credits</p>	<p>ASSOCIATE'S DEGREE</p> <p>🕒 2 Years</p> <p>🎓 60 Credits</p>	<p>BACHELOR'S DEGREE</p> <p>🕒 4 Years</p> <p>🎓 120 Credits</p>
<p>POST-BACCALAUREATE DIPLOMA</p> <p>🕒 2 Years</p> <p>🎓 30 Credits</p>	<p>GRADUATE CERTIFICATE</p> <p>🕒 1 Year</p> <p>🎓 18 Credits</p>	<p>GRADUATE DIPLOMA</p> <p>🕒 2 Years</p> <p>🎓 36 Credits</p>	<p><i>Exact program length and details may vary. Please check kpu.ca/calendar for more information.</i></p>

Academic Levels and Intake Types

Each program at KPU has an **academic level** and an **intake type**.

Academic Level

PREPARATORY PROGRAM

Pre-undergraduate education designed to upgrade or enhance academic skills in preparation for undergraduate studies. KPU's English Language Studies program and the Pathway to Undergraduate Studies fall in this category.

UNDERGRADUATE PROGRAM

Post-secondary education at the university or college level that includes either baccalaureate or post-baccalaureate course work. KPU offers certificates, diplomas, associate's degrees, bachelor's degrees, and post-baccalaureate diplomas at the undergraduate level.

GRADUATE PROGRAM

Post-secondary programs above the undergraduate level. Graduate programs will generally require applicants to have a recognized undergraduate or graduate degree in order to apply. KPU offers graduate certificate and graduate diploma programs.

VOCATIONAL PROGRAMS

Programs that combine skills and knowledge specific to a particular industry or career. These programs blend in-class learning with time on the job working with an employer sponsor.

Intake Type

OPEN INTAKE: These programs are open for admission at every intake (Fall, Spring, and Summer). Students who meet the admission requirements and apply by the application deadline are great candidates for admission.

LIMITED INTAKE: These programs are highly competitive and only admit a select number of students per intake. Not all limited intake programs are offered at all intakes, and application deadlines are earlier than for open intake programs. In general, they'll also have supplementary admission requirements (such as portfolio reviews, interviews, GPA requirements).

“Mechatronics offers a mix of electronics and mechanical engineering that is more than just machines. It's fun working alongside everyone. We have a very close community and KPU's program is the tip of the iceberg.”

Blessing Nabhimba

MECHATRONICS AND ADVANCED MANUFACTURING GRAD

Learn more about Blessing and the Faculty of Trades and Technology

kpu.ca/trades

Undergraduate *programs*

BACHELOR'S DEGREE PROGRAMS

A bachelor's degree from KPU sets you up for success. Develop your skills, connect with classmates and instructors from around the world, and get valuable experience for your future career.

KPU offers nearly 40 exciting bachelor's degree programs that get you the knowledge and experience you need to stay relevant and competitive in our rapidly developing world.

Programs like...

- » Bachelor of Applied Science in Sustainable Agriculture
- » Bachelor of Arts in Criminology
- » Bachelor of Business Administration in Entrepreneurial Leadership
- » Bachelor of Design in Fashion and Technology
- » Bachelor of Journalism

See full program list and program details on page 24.



"I couldn't imagine being an assistant to a designer. [My internship at] Kensie and Kwantlen changed it all. I walked out of that internship and said, 'I can do this!'"

Taylor Byrom

Bachelor of Design, Fashion and Technology Alumna
Founder and owner of Taylor Hart Designs, and winner of the Greater Langley Chamber of Commerce Entrepreneur of the Year award, 2017

 Taylor Byrom, Fashion and Technology Alumna

Learn more about Taylor's story
kpu.ca/alumni/taylor-byrom



"With smaller class sizes run by teachers that care about their students, Kwantlen prepared me well for a successful entrepreneurial journey."

Ankit Sharma

BBA, ENTREPRENEURIAL LEADERSHIP ALUMNUS

Founder, owner, and CEO of Kitply Industries, a multi-million-dollar building supply company.

Check out his story

kpu.ca/alumni/ankit-sharma

LOOKING FOR A MORE COMPACT STUDY PROGRAM?

KPU also offers certificate, diploma, and associate's degree programs. See full program list and program details on page 24.

Post-baccalaureate and graduate *programs*

POST-BACCALAUREATE PROGRAMS | 2 YEARS

Take your skills to the next level with a post-baccalaureate diploma. These focused, full-time programs are designed to help students who already have an undergraduate degree enhance their employment opportunities or prepare for graduate-level studies.

- » Post-Baccalaureate Diploma in Accounting
- » Post-Baccalaureate Diploma in Human Resources Management
- » Post-Baccalaureate Diploma in Operations and Supply Chain Management
- » Post-Baccalaureate Diploma in Technical Management and Services
- » Post-Baccalaureate Diploma in Technical Apparel Design

See program details on page 24.

GRADUATE PROGRAMS | 1-2 YEARS

Accelerate your career with a graduate diploma or certificate from KPU. Experienced industry professionals and new grads alike will gain the tools and knowledge to become leaders in their fields.

- » Graduate Certificate in Sustainable Food Systems and Security
- » Graduate Diploma in Global Business Management
- » Graduate Diploma in Green Business Management and Sustainability

See program details on page 24.



“KPU is connected to industry giants. There’s a high quality of education here and Vancouver is the technical apparel capital of the world so while you’re learning and creating, you’re being inspired, too.”

Ogechukwu Rita Nwokolo

TECHNICAL APPAREL
DESIGN GRAD

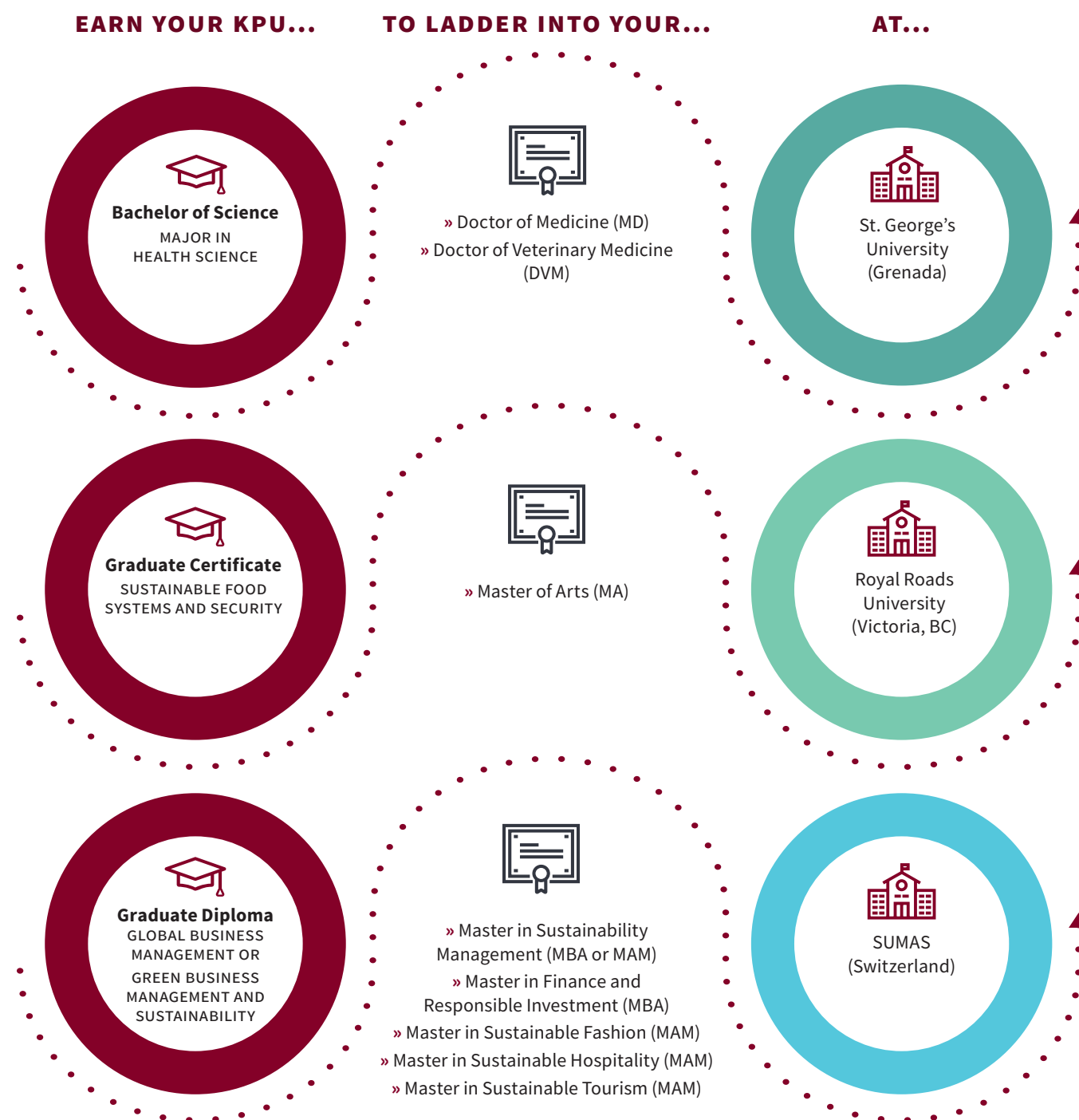
Read Ogechukwu's full story and learn more about the Wilson School of Design

kpu.ca/design

Laddering *opportunities*

Earn your master’s degree, medical degree, and more after graduating from KPU.

We make it easy for KPU grads to further their goals by providing exceptional laddering opportunities to partner institutions around the world.





Admission requirements

UNDERGRADUATE ADMISSION REQUIREMENTS

To be admitted as a student in an undergraduate program, you must show that:

- » You meet KPU's Undergraduate English Proficiency Requirement
- » You have graduated from high school (secondary school) or completed 24 or more undergraduate-level credits with a minimum cumulative GPA of 2.0*

*Don't meet this requirement? If you will be 19 years of age or older on the first day of classes, it's possible to be admitted as a mature student at the discretion of the Registrar. Get in touch with KPU International for more info.

POST-BACCALAUREATE AND GRADUATE ADMISSION REQUIREMENTS

To be admitted as a student to a post-baccalaureate or graduate program, you must show that:

- » You meet KPU's Undergraduate English Proficiency Requirement
- » You have successfully graduated from a recognized undergraduate or graduate degree program

Some programs will have other admission requirements and/or program recommendations in addition to the general requirements noted here. See Program Details for more information on each program.

English Proficiency Requirements for Admission

All applicants to an undergraduate or graduate level program at KPU must meet the **Undergraduate English Proficiency Requirement** in order to be admitted.

The Undergraduate English Proficiency Requirement can be fulfilled through any **ONE** of the following ways:

HIGH SCHOOL COURSES

- » **British Columbia High School:** BC English Studies 12, English First Peoples 12, or Literary Studies 12 with a minimum grade of C+ (Canadian equivalents also accepted: kpu.ca/admission/canadian-equivalencies)
- » **International Baccalaureate (IB):** IB English A (HL or SL) with a minimum grade of 3 (or C+)
- » **Advanced Placement (AP):** AP English Language and Composition or AP English Literature and Composition with a minimum grade of 2 (or C+)

It may be possible to use high school courses from other countries where English is the official language to fulfill the Undergraduate English Proficiency Requirement. Transcript evaluation is required. Get in touch with KPU International—we can help you figure it out.

UNDERGRADUATE COURSES

- » Completion of 3 credits of undergraduate English (ENGL) with a minimum grade of C- from a recognized post-secondary institution where English is the primary language of instruction
- » Graduation from a baccalaureate degree, or a two-year diploma program, or successful completion of 60 credits at the undergraduate level, with a minimum CGPA of 2.0, at a recognized post-secondary institution where English is the primary language of instruction

or

or

TESTING OPTIONS

- » **KPU English Placement Test (EPT):** Placement into ENGL 1100
- » **IELTS:** Overall band of 6.5 or higher, with a minimum 6.0 in each band, taken within the last two years from the term of admission
- » **TOEFL:** iBT 88 or higher, with no sub-score less than 20, taken within the last two years from the term of admission
- » **CAEL:** Score of 70 or higher with no sub-score less than 60, taken within the last two years from the term of admission
- » **PTE:** Score of 61 or higher, taken within the last two years from the term of admission
- » **LPI:** Level 5 with an essay score of 30 or higher, taken within the last two years from the term of admission
- » **Duolingo English Test:** Score of 110 or higher, taken within the last two years from the term of admission (accepted on a temporary basis until in-person testing resumes)

or

or

KPU COURSES

- » ELST 0381 and ELST 0383 (or equivalents) with a minimum grade of B in both courses, or ELST 0381 with a minimum grade of B and a KPU placement score higher than ELST 0383 level
- » Completion of ENGQ 1091, ENGQ 1092, or ENGQ 1099 (or equivalents) with a minimum grade of C

kpu pathway

Interested in coming to KPU but don't meet the English Proficiency Requirements for Undergraduate Admission? Check out the KPU Pathway!



UNDERGRADUATE COURSE OPTIONS

Take real undergraduate classes for credit alongside mandatory Pathway classes.



AFFORDABLE TUITION FOR INTERNATIONAL STUDENTS

Only \$378.55 CAD per credit for Pathway courses.



SMALL CLASS SIZES

Maximum of only 17 students per Pathway English class.

Pathway Program Details

PATHWAY 1 ↗

Start here if you have a **minimum** score of **4.5** or **5.0** in each **IELTS band** or equivalent



\$4,542.60
1 semester
12 credits

PATHWAY 2 ↗

Start here if you have a **minimum** score of **5.5** in each **IELTS band** or equivalent



\$3,406.95
1 semester
9 credits

+ **option** of taking up to 4 credits of undergraduate courses at additional cost.

PATHWAY 3 →

Start here if you have a **minimum** score of **6.0** in each **IELTS band** or equivalent



\$3,406.95
1 semester
9 credits

+ **option** of taking up to 8 credits of undergraduate courses at additional cost

PATHWAY 4

ENGLISH UPGRADING COMPLETE!



Transition to full-time undergraduate studies at **KPU**

Your current English level to enter the Pathway is based on your assessment from an **IELTS exam** or an **equivalent**, like the **TOEFL, CAEL, PTE, LPI** or **Duolingo English Test**.

You can also take the in-house KPU English placement exam.

kpu.ca/international/pathway



“My familiarity with the country and the people was limited but I gained so much knowledge in so many fields, not just English. I met so many friendly people and made a lot of friends from diverse cultures.”

Maryam Alkaloo

ENGLISH LANGUAGE STUDIES GRAD

Learn more about Maryam's story and the Faculty of Academic and Career Preparation

kpu.ca/acp



Completing the **Pathway** lets you ladder directly into **80+** open intake undergraduate programs at KPU.

Interested in a post-baccalaureate diploma? There are English upgrading options available for you, too! Get in touch with KPU International to learn more about the Kwantlen English Preparation for Post-Baccalaureate (KEPP) program.

Program details

KPU Campuses **C** Civic Plaza » **L** Langley » **R** Richmond » **S** Surrey » **T** Tech (Cloverdale) » **O** Online

Additional Program Components **co** Co-op offered / **H** Honours program offered

These program details were last updated August 2021. For the most up-to-date information about programs and courses, visit kpu.ca/

calendar. For the Math Alternatives Table, visit kpu.ca/mathalternatives.

"Other program recommendations" are listed for some programs. While these recommendations are not requirements of admission, students who do not meet these recommendations may need to do additional program planning and/or take additional courses to successfully complete their program.

GRADUATE DIPLOMAS 2 YEARS

PROGRAM	FACULTY	REQUIREMENTS	INTAKE/ START DATES	ESTIMATED TUITION & FEES
Global Business Management C	School of Business	» Undergraduate English Proficiency Requirement » Successful completion of a recognized undergraduate or graduate degree with a minimum cumulative GPA of 2.67* » Statement of intent in the program » Two professional references stating suitability for the program <i>*Applicants with an equivalent combination of education and relevant professional experience may be considered</i>	Limited Intake Fall (Sep) Spring (Jan)	\$26,681.31 36 credits
Green Business Management and Sustainability C	School of Business	» Undergraduate English Proficiency Requirement » Successful completion of a recognized undergraduate or graduate degree with a minimum cumulative GPA of 2.67* » Statement of intent in the program » Two professional references stating suitability for the program <i>*Applicants with an equivalent combination of education and relevant professional experience may be considered</i>	Limited Intake Fall (Sep) Spring (Jan)	\$26,681.31 36 credits

GRADUATE CERTIFICATES 1 YEAR

PROGRAM	FACULTY	REQUIREMENTS	INTAKE/ START DATES	ESTIMATED TUITION & FEES
Sustainable Food Systems and Security O	Faculty of Arts	» Undergraduate English Proficiency Requirement » Successful completion of a recognized undergraduate or graduate degree with a minimum cumulative GPA of 3.0. Applicants with a GPA lower than 3.0 may be considered for program suitability in conjunction with other stated admissions requirements » Statement of intent in the program, including relevant studies and work experience » Three references (one academic, two professional)	Limited Intake Fall (Sep)	\$13,370.13 18 credits

POST-BACCALAUREATE DIPLOMAS 2 YEARS

PROGRAM	FACULTY	REQUIREMENTS	INTAKE/ START DATES	ESTIMATED TUITION & FEES
Accounting C	School of Business	» Undergraduate English Proficiency Requirement » Successful completion of a recognized undergraduate degree in any discipline	Open Intake Fall (Sep) Spring (Jan) Summer (May)	\$37,773.96 51 credits
Human Resources Management C co	School of Business	» Undergraduate English Proficiency Requirement » Successful completion of a recognized undergraduate degree with a GPA equivalent of 2.33 or higher	Open Intake Fall (Sep) Spring (Jan) Summer (May)	\$31,118.37 42 credits
Operations and Supply Chain Management C co	School of Business	» Undergraduate English Proficiency Requirement » Successful completion of a recognized undergraduate degree <i>or</i> successful completion of a recognized technical or science diploma, along with a minimum of 5 years of related experience	Limited Intake Fall (Sep) Spring (Jan) Summer (May)	\$24,462.78 33 credits
Technical Management and Services C	School of Business	» Undergraduate English Proficiency Requirement » Successful completion of a recognized undergraduate or graduate degree in science or technology <i>or</i> successful completion of a recognized technical or science diploma, along with a minimum of 5 years of related experience	Limited Intake Fall (Sep) Spring (Jan) Summer (May)	\$24,462.78 33 credits
Technical Apparel Design R	Wilson School of Design	» Undergraduate English Proficiency Requirement » Successful completion of a recognized undergraduate degree <i>or</i> successful completion of a design related diploma or associate's degree along with a minimum of 5 years of related experience » Letter of Interest package » Interview	Limited Intake Fall (Sep)	\$26,681.31 36 credits

BACHELOR'S DEGREES 4 YEARS

PROGRAM	FACULTY	REQUIREMENTS	INTAKE/ START DATES	ESTIMATED TUITION & FEES
Anthropology L R S	Faculty of Arts	» Undergraduate English Proficiency Requirement » Graduation from high school (secondary school) <i>or</i> completion of 24 or more undergraduate-level credits with a minimum cumulative GPA of 2.0	Open Intake Fall (Sep) Spring (Jan) Summer (May)	\$88,800.15 120 credits
Asian Studies L R S	Faculty of Arts	» Undergraduate English Proficiency Requirement » Graduation from high school (secondary school) <i>or</i> completion of 24 or more undergraduate-level credits with a minimum cumulative GPA of 2.0	Open Intake Fall (Sep) Spring (Jan) Summer (May)	\$88,800.15 120 credits
Creative Writing L R S	Faculty of Arts	» Undergraduate English Proficiency Requirement » Graduation from high school (secondary school) <i>or</i> completion of 24 or more undergraduate-level credits with a minimum cumulative GPA of 2.0 Other program recommendations: English Studies 12 (B) or equivalent	Open Intake Fall (Sep) Spring (Jan) Summer (May)	\$88,800.15 120 credits
Criminology L R S co H	Faculty of Arts	» Undergraduate English Proficiency Requirement » Graduation from high school (secondary school) <i>or</i> completion of 24 or more undergraduate-level credits with a minimum cumulative GPA of 2.0	Open Intake Fall (Sep) Spring (Jan) Summer (May)	\$88,800.15 120 credits
English L R S	Faculty of Arts	» Undergraduate English Proficiency Requirement » Graduation from high school (secondary school) <i>or</i> completion of 24 or more undergraduate-level credits with a minimum cumulative GPA of 2.0	Open Intake Fall (Sep) Spring (Jan) Summer (May)	\$88,800.15 120 credits
Fine Arts S	Faculty of Arts	» Undergraduate English Proficiency Requirement » Graduation from high school (secondary school) <i>or</i> completion of 24 or more undergraduate-level credits with a minimum cumulative GPA of 2.0 Other program recommendations: English Studies 12 (B) or equivalent	Open Intake Fall (Sep) Spring (Jan) Summer (May)	\$88,800.15 120 credits
General Studies L R S	Faculty of Arts	» Undergraduate English Proficiency Requirement » Graduation from high school (secondary school) <i>or</i> completion of 24 or more undergraduate-level credits with a minimum cumulative GPA of 2.0	Open Intake Fall (Sep) Spring (Jan) Summer (May)	\$88,800.15 120 credits
Geography, Applied L R S	Faculty of Arts	» Undergraduate English Proficiency Requirement » Graduation from high school (secondary school) <i>or</i> completion of 24 or more undergraduate-level credits with a minimum cumulative GPA of 2.0	Open Intake Fall (Sep) Spring (Jan) Summer (May)	\$88,800.15 120 credits
History L R S	Faculty of Arts	» Undergraduate English Proficiency Requirement » Graduation from high school (secondary school) <i>or</i> completion of 24 or more undergraduate-level credits with a minimum cumulative GPA of 2.0	Open Intake Fall (Sep) Spring (Jan) Summer (May)	\$88,800.15 120 credits
Journalism L R S H	Faculty of Arts	» Undergraduate English Proficiency Requirement » Graduation from high school (secondary school) <i>or</i> completion of 24 or more undergraduate-level credits with a minimum cumulative GPA of 2.0	Open Intake Fall (Sep) Spring (Jan) Summer (May)	\$88,800.15 120 credits
Philosophy L R S H	Faculty of Arts	» Undergraduate English Proficiency Requirement » Graduation from high school (secondary school) <i>or</i> completion of 24 or more undergraduate-level credits with a minimum cumulative GPA of 2.0	Open Intake Fall (Sep) Spring (Jan) Summer (May)	\$88,800.15 120 credits
Policy Studies L R S	Faculty of Arts	» Undergraduate English Proficiency Requirement » Graduation from high school (secondary school) <i>or</i> completion of 24 or more undergraduate-level credits with a minimum cumulative GPA of 2.0	Open Intake Fall (Sep) Spring (Jan) Summer (May)	\$88,800.15 120 credits
Political Science L R S	Faculty of Arts	» Undergraduate English Proficiency Requirement » Graduation from high school (secondary school) <i>or</i> completion of 24 or more undergraduate-level credits with a minimum cumulative GPA of 2.0	Open Intake Fall (Sep) Spring (Jan) Summer (May)	\$88,800.15 120 credits
Psychology L R S H	Faculty of Arts	» Undergraduate English Proficiency Requirement » Graduation from high school (secondary school) <i>or</i> completion of 24 or more undergraduate-level credits with a minimum cumulative GPA of 2.0. » Option to pursue a Bachelor of Applied Arts, Bachelor of Applied Arts (Honours), Bachelor of Arts, Bachelor of Arts (Honours), Bachelor of Science, or Bachelor of Science (Honours) credential. Other program recommendations: If pursuing Bachelor of Science or Bachelor of Science (Honours), English Studies 12 (B) or equivalent and Level A1 of the Math Alternatives Table recommended.	Open Intake Fall (Sep) Spring (Jan) Summer (May)	\$88,800.15 120 credits

Program Details *continued*

KPU Campuses **C** Civic Plaza » **L** Langley » **R** Richmond

S Surrey » **T** Tech (Cloverdale) » **O** Online

Additional Program Components

co Co-op offered / **H** Honours program offered

BACHELOR'S DEGREES 4 YEARS *continued*

PROGRAM	FACULTY	REQUIREMENTS	INTAKE/ START DATES	ESTIMATED TUITION & FEES
Sociology L R S	Faculty of Arts	» Undergraduate English Proficiency Requirement » Graduation from high school (secondary school) <i>or</i> completion of 24 or more undergraduate-level credits with a minimum cumulative GPA of 2.0.	Open Intake Fall (Sep) Spring (Jan) Summer (May)	\$88,800.15 120 credits
Accounting R S co	School of Business	» Undergraduate English Proficiency Requirement » Graduation from high school (secondary school) <i>or</i> completion of 24 or more undergraduate-level credits with a minimum cumulative GPA of 2.0	Open Intake Fall (Sep) Spring (Jan) Summer (May)	\$88,800.15 120 credits
Entrepreneurial Leadership R S co	School of Business	» Undergraduate English Proficiency Requirement » Graduation from high school (secondary school) <i>or</i> completion of 24 or more undergraduate-level credits with a minimum cumulative GPA of 2.0	Open Intake Fall (Sep) Spring (Jan) Summer (May)	\$88,800.15 120 credits
Human Resources Management S co	School of Business	» Undergraduate English Proficiency Requirement » Graduation from high school (secondary school) <i>or</i> completion of 24 or more undergraduate-level credits with a minimum cumulative GPA of 2.0	Open Intake Fall (Sep) Spring (Jan) Summer (May)	\$88,800.15 120 credits
Information Technology S co	School of Business	» Undergraduate English Proficiency Requirement » Graduation from high school (secondary school) <i>or</i> completion of 24 or more undergraduate-level credits with a minimum cumulative GPA of 2.0 Other program recommendations: Level E1 of the Math Alternatives Table	Open Intake Fall (Sep) Spring (Jan) Summer (May)	\$88,800.15 120 credits
Marketing Management L R S co	School of Business	» Undergraduate English Proficiency Requirement » Graduation from high school (secondary school) <i>or</i> completion of 24 or more undergraduate-level credits with a minimum cumulative GPA of 2.0	Open Intake Fall (Sep) Spring (Jan) Summer (May)	\$88,800.15 120 credits
Fashion & Technology R	Wilson School of Design	» Undergraduate English Proficiency Requirement » Graduation from high school (secondary school) <i>or</i> completion of 24 or more undergraduate-level credits with a minimum cumulative GPA of 2.0 » Portfolio Review and Orientation Session	Limited Intake Fall (Sep)	\$88,800.15 120 credits
Graphic Design for Marketing R	Wilson School of Design	» Undergraduate English Proficiency Requirement » Graduation from high school (secondary school) <i>or</i> completion of 24 or more undergraduate-level credits with a minimum cumulative GPA of 2.0 » Portfolio Review and Interview Session	Limited Intake Fall (Sep)	\$88,800.15 120 credits
Interior Design R	Wilson School of Design	» Undergraduate English Proficiency Requirement » Graduation from high school (secondary school) <i>or</i> completion of 24 or more undergraduate-level credits with a minimum cumulative GPA of 2.0 » Portfolio Review and Interview Session	Limited Intake Fall (Sep)	\$94,716.23 128 credits
Product Design R	Wilson School of Design	» Undergraduate English Proficiency Requirement » Graduation from high school (secondary school) <i>or</i> completion of 24 or more undergraduate-level credits with a minimum cumulative GPA of 2.0 » Portfolio Review and Interview Session	Limited Intake Fall (Sep)	\$88,800.15 120 credits
Applications of Mathematics R S H	Faculty of Science & Horticulture	» Undergraduate English Proficiency Requirement » Graduation from high school (secondary school) <i>or</i> completion of 24 or more undergraduate-level credits with a minimum cumulative GPA of 2.0 Other program recommendations: Level B1 of the Math Alternatives Table • Chemistry 12 (C+) or equivalent • Physics 12 (P) or equivalent (if intending to take the biomathematics concentration, English Studies 12 (B) or equivalent is also recommended)	Open Intake Fall (Sep) Spring (Jan) Summer (May)	\$90,279.17 122 credits
Biology R S	Faculty of Science & Horticulture	» Undergraduate English Proficiency Requirement » Graduation from high school (secondary school) <i>or</i> completion of 24 or more undergraduate-level credits with a minimum cumulative GPA of 2.0 Other program recommendations: English Studies 12 (B) or equivalent • Level A1 of the Math Alternatives Table • Chemistry 12 (C+) or equivalent • Physics 12 (P) or equivalent	Open Intake Fall (Sep) Spring (Jan) Summer (May)	\$102,111.33 138 credits

PROGRAM	FACULTY	REQUIREMENTS	INTAKE/ START DATES	ESTIMATED TUITION & FEES
Health Science R S H	Faculty of Science & Horticulture	» Undergraduate English Proficiency Requirement » Graduation from high school (secondary school) <i>or</i> completion of 24 or more undergraduate-level credits with a minimum cumulative GPA of 2.0 Other program recommendations: English Studies 12 (B) or equivalent • Chemistry 12 (C+) • Physics 12 (P) • Level A1 of the Math Alternatives Table	Open Intake Fall (Sep) Spring (Jan) Summer (May)	\$91,758.19 124 credits
Physics for Modern Technology R S	Faculty of Science & Horticulture	» Undergraduate English Proficiency Requirement » Graduation from high school (secondary school) <i>or</i> completion of 24 or more undergraduate-level credits with a minimum cumulative GPA of 2.0 Other program recommendations: English 12 (B) or equivalent • Chemistry 12 (C+) or equivalent • Level A1 of the Math Alternatives Table • Physics 12 (C) or equivalent	Open Intake Fall (Sep) Spring (Jan) Summer (May)	\$93,976.72 127 credits
Plant Health L	Faculty of Science & Horticulture	» Undergraduate English Proficiency Requirement » Graduation from high school (secondary school) <i>or</i> completion of 24 or more undergraduate-level credits with a minimum cumulative GPA of 2.0 Other program recommendations: English Studies 12 (B) or equivalent • Level C1 of the Math Alternatives Table • Chemistry 11 (C+) or Chemistry 12 (C-) or equivalent	Open Intake Fall (Sep) Spring (Jan) Summer (May)	\$90,279.17 122 credits
Sustainable Agriculture R	Faculty of Science & Horticulture	» Undergraduate English Proficiency Requirement » Graduation from high school (secondary school) <i>or</i> completion of 24 or more undergraduate-level credits with a minimum cumulative GPA of 2.0 Other program recommendations: English Studies 12 (B) or equivalent • Level C1 of the Math Alternatives Table • Chemistry 11 (C+) or Chemistry 12 (C-) or equivalent	Open Intake Fall (Sep) Spring (Jan) Summer (May)	\$88,800.15 120 credits
Urban Ecosystems L	Faculty of Science & Horticulture	» Undergraduate English Proficiency Requirement » Graduation from high school (secondary school) <i>or</i> completion of 24 or more undergraduate-level credits with a minimum cumulative GPA of 2.0 Other program recommendations: English Studies 12 (B) or equivalent • Chemistry 11 (C+) or Chemistry 12 (C-) or equivalent • Level E1 of the Math Alternatives Table	Open Intake Fall (Sep) Spring (Jan) Summer (May)	\$89,539.66 121 credits

ASSOCIATE'S DEGREES 2 YEARS

PROGRAM	FACULTY	REQUIREMENTS	INTAKE/ START DATES	ESTIMATED TUITION & FEES
Anthropology L R S	Faculty of Arts	» Undergraduate English Proficiency Requirement » Graduation from high school (secondary school) <i>or</i> completion of 24 or more undergraduate-level credits with a minimum cumulative GPA of 2.0	Open Intake Fall (Sep) Spring (Jan) Summer (May)	\$44,429.55 60 credits
Asian Studies L R S	Faculty of Arts	» Undergraduate English Proficiency Requirement » Graduation from high school (secondary school) <i>or</i> completion of 24 or more undergraduate-level credits with a minimum cumulative GPA of 2.0	Open Intake Fall (Sep) Spring (Jan) Summer (May)	\$44,429.55 60 credits
Creative Writing L R S	Faculty of Arts	» Undergraduate English Proficiency Requirement » Graduation from high school (secondary school) <i>or</i> completion of 24 or more undergraduate-level credits with a minimum cumulative GPA of 2.0 Other program recommendations: English Studies 12 (B) or equivalent	Open Intake Fall (Sep) Spring (Jan) Summer (May)	\$44,429.55 60 credits
Criminology L R S	Faculty of Arts	» Undergraduate English Proficiency Requirement » Graduation from high school (secondary school) <i>or</i> completion of 24 or more undergraduate-level credits with a minimum cumulative GPA of 2.0	Open Intake Fall (Sep) Spring (Jan) Summer (May)	\$44,429.55 60 credits
English L R S	Faculty of Arts	» Undergraduate English Proficiency Requirement » Graduation from high school (secondary school) <i>or</i> completion of 24 or more undergraduate-level credits with a minimum cumulative GPA of 2.0	Open Intake Fall (Sep) Spring (Jan) Summer (May)	\$44,429.55 60 credits
General Studies L R S	Faculty of Arts	» Undergraduate English Proficiency Requirement » Graduation from high school (secondary school) <i>or</i> completion of 24 or more undergraduate-level credits with a minimum cumulative GPA of 2.0	Open Intake Fall (Sep) Spring (Jan) Summer (May)	\$44,429.55 60 credits
Geography L R S	Faculty of Arts	» Undergraduate English Proficiency Requirement » Graduation from high school (secondary school) <i>or</i> completion of 24 or more undergraduate-level credits with a minimum cumulative GPA of 2.0	Open Intake Fall (Sep) Spring (Jan) Summer (May)	\$44,429.55 60 credits

Program Details *continued*

KPU Campuses **C** Civic Plaza » **L** Langley » **R** Richmond

S Surrey » **T** Tech (Cloverdale) » **O** Online

Additional Program Components

co Co-op offered / **H** Honours program offered

ASSOCIATE'S DEGREES 2 YEARS *continued*

PROGRAM	FACULTY	REQUIREMENTS	INTAKE/ START DATES	ESTIMATED TUITION & FEES
History L R S	Faculty of Arts	» Undergraduate English Proficiency Requirement » Graduation from high school (secondary school) <i>or</i> completion of 24 or more undergraduate-level credits with a minimum cumulative GPA of 2.0	Open Intake Fall (Sep) Spring (Jan) Summer (May)	\$44,429.55 60 credits
Philosophy L R S	Faculty of Arts	» Undergraduate English Proficiency Requirement » Graduation from high school (secondary school) <i>or</i> completion of 24 or more undergraduate-level credits with a minimum cumulative GPA of 2.0	Open Intake Fall (Sep) Spring (Jan) Summer (May)	\$44,429.55 60 credits
Political Science L R S	Faculty of Arts	» Undergraduate English Proficiency Requirement » Graduation from high school (secondary school) <i>or</i> completion of 24 or more undergraduate-level credits with a minimum cumulative GPA of 2.0	Open Intake Fall (Sep) Spring (Jan) Summer (May)	\$44,429.55 60 credits
Psychology L R S	Faculty of Arts	» Undergraduate English Proficiency Requirement » Graduation from high school (secondary school) <i>or</i> completion of 24 or more undergraduate-level credits with a minimum cumulative GPA of 2.0	Open Intake Fall (Sep) Spring (Jan) Summer (May)	\$44,429.55 60 credits
Sociology L R S	Faculty of Arts	» Undergraduate English Proficiency Requirement » Graduation from high school (secondary school) <i>or</i> completion of 24 or more undergraduate-level credits with a minimum cumulative GPA of 2.0	Open Intake Fall (Sep) Spring (Jan) Summer (May)	\$44,429.55 60 credits
Economics L R S	School of Business	» Undergraduate English Proficiency Requirement » Graduation from high school (secondary school) <i>or</i> completion of 24 or more undergraduate-level credits with a minimum cumulative GPA of 2.0 Other program recommendations: Level B1 of the Math Alternatives Table	Open Intake Fall (Sep) Spring (Jan) Summer (May)	\$44,429.55 60 credits
General Science L R S	Faculty of Science & Horticulture	» Undergraduate English Proficiency Requirement » Graduation from high school (secondary school) <i>or</i> completion of 24 or more undergraduate-level credits with a minimum cumulative GPA of 2.0 Other program recommendations: English Studies 12 (B) or equivalent • Level C1 of the Math Alternatives Table • Chemistry 11 (C+) or Chemistry 12 (P) or equivalent • Physics 12 (C) or equivalent	Open Intake Fall (Sep) Spring (Jan) Summer (May)	\$44,429.55 60 credits
Mathematics R S	Faculty of Science & Horticulture	» Undergraduate English Proficiency Requirement » Graduation from high school (secondary school) <i>or</i> completion of 24 or more undergraduate-level credits with a minimum cumulative GPA of 2.0 Other program recommendations: Level B1 of the Math Alternatives Table • Chemistry 11 (C+) or Chemistry 12 (P) or equivalent • Physics 12 (P) or equivalent	Open Intake Fall (Sep) Spring (Jan) Summer (May)	\$44,429.55 60 credits

DIPLOMAS 2 YEARS

PROGRAM	FACULTY	REQUIREMENTS	INTAKE/ START DATES	ESTIMATED TUITION & FEES
English Language Proficiency (Preparatory) L R S	Faculty of Academic and Career Preparation	» IELTS 4.5 (with no sub-score less than 4.0) <i>or</i> TOEFL iBT 32 (with writing and speaking 12; listening and reading 6) <i>or</i> KPU ELST assessment into ELST 0041 or higher and ELST assessment into ELST 0043 or higher	Limited Intake Fall (Sep) Spring (Jan) Summer (May)	\$24,848.39 60 credits
Arts L R S	Faculty of Arts	» Undergraduate English Proficiency Requirement » Graduation from high school (secondary school) <i>or</i> completion of 24 or more undergraduate-level credits with a minimum cumulative GPA of 2.0	Open Intake Fall (Sep) Spring (Jan) Summer (May)	\$44,429.55 60 credits
Criminology L R S	Faculty of Arts	» Undergraduate English Proficiency Requirement » Graduation from high school (secondary school) <i>or</i> completion of 24 or more undergraduate-level credits with a minimum cumulative GPA of 2.0	Open Intake Fall (Sep) Spring (Jan) Summer (May)	\$44,429.55 60 credits
Fine Arts L R S	Faculty of Arts	» Undergraduate English Proficiency Requirement » Graduation from high school (secondary school) <i>or</i> completion of 24 or more undergraduate-level credits with a minimum cumulative GPA of 2.0	Open Intake Fall (Sep) Spring (Jan) Summer (May)	\$44,429.55 60 credits
General Studies L R S	Faculty of Arts	» Undergraduate English Proficiency Requirement » Graduation from high school (secondary school) <i>or</i> completion of 24 or more undergraduate-level credits with a minimum cumulative GPA of 2.0	Open Intake Fall (Sep) Spring (Jan) Summer (May)	\$44,429.55 60 credits

PROGRAM	FACULTY	REQUIREMENTS	INTAKE/ START DATES	ESTIMATED TUITION & FEES
Accounting R S	School of Business	» Undergraduate English Proficiency Requirement » Graduation from high school (secondary school) <i>or</i> completion of 24 or more undergraduate-level credits with a minimum cumulative GPA of 2.0	Open Intake Fall (Sep) Spring (Jan) Summer (May)	\$44,429.55 60 credits
Business Administration L R S	School of Business	» Undergraduate English Proficiency Requirement » Graduation from high school (secondary school) <i>or</i> completion of 24 or more undergraduate-level credits with a minimum cumulative GPA of 2.0 Other program recommendations: Level B1 of the Math Alternatives Table	Open Intake Fall (Sep) Spring (Jan) Summer (May)	\$44,429.55 60 credits
Business Management L R S	School of Business	» Undergraduate English Proficiency Requirement » Graduation from high school (secondary school) <i>or</i> completion of 24 or more undergraduate-level credits with a minimum cumulative GPA of 2.0	Open Intake Fall (Sep) Spring (Jan) Summer (May)	\$44,429.55 60 credits
Computer Information Systems S co	School of Business	» Undergraduate English Proficiency Requirement » Graduation from high school (secondary school) <i>or</i> completion of 24 or more undergraduate-level credits with a minimum cumulative GPA of 2.0 Other program recommendations: Level E1 of the Math Alternatives Table	Open Intake Fall (Sep) Spring (Jan) Summer (May)	\$44,429.55 60 credits
General Business Studies L R S	School of Business	» Undergraduate English Proficiency Requirement » Graduation from high school (secondary school) <i>or</i> completion of 24 or more undergraduate-level credits with a minimum cumulative GPA of 2.0	Open Intake Fall (Sep) Spring (Jan) Summer (May)	\$44,429.55 60 credits
Marketing Management L R S co	School of Business	» Undergraduate English Proficiency Requirement » Graduation from high school (secondary school) <i>or</i> completion of 24 or more undergraduate-level credits with a minimum cumulative GPA of 2.0	Open Intake Fall (Sep) Spring (Jan) Summer (May)	\$44,429.55 60 credits
Public Relations R co	School of Business	» Undergraduate English Proficiency Requirement » Graduation from high school (secondary school) <i>or</i> completion of 24 or more undergraduate-level credits with a minimum cumulative GPA of 2.0	Open Intake Fall (Sep) Spring (Jan) Summer (May)	\$44,429.55 60 credits
Fashion & Technology R	Wilson School of Design	» Undergraduate English Proficiency Requirement » Graduation from high school (secondary school) <i>or</i> completion of 24 or more undergraduate-level credits with a minimum cumulative GPA of 2.0 » Portfolio Review and Orientation Session	Limited Intake Fall (Sep)	\$44,429.55 60 credits
Fashion Marketing R	Wilson School of Design	» Undergraduate English Proficiency Requirement » Graduation from high school (secondary school) <i>or</i> completion of 24 or more undergraduate-level credits with a minimum cumulative GPA of 2.0 » Information Session and Letter of Interest Package	Limited Intake Fall (Sep)	\$44,429.55 60 credits
Traditional Chinese Medicine – Acupuncture R	Faculty of Health	» Undergraduate English Proficiency Requirement » Graduation from high school (secondary school) <i>or</i> completion of 24 or more undergraduate-level credits with a minimum cumulative GPA of 2.0 » Interview by the Program Coordinator and/or letters of reference if requested » Once conditional offer is made: Canadian CPR Health Care Provider or Basic Life Support (CPR certification must remain current throughout the program) • An acceptable Criminal Record Check through the Ministry of Public Safety and Solicitor General's Criminal Records Review Program within 6 months prior to the start of the program • International applicants are required to provide a Criminal Record Search with the Vulnerable Sector from their country of origin • Immunization Record Form reflecting required immunizations as per Practice Education Guidelines (PEG) for BC. Note: The PEG outline immunizations for vaccine preventable communicable diseases required by students for participation in practice experiences. KPU Faculty of Health is required to comply with these requirements. Students that are unvaccinated may not be accepted into the program. Students who are accepted into the program will also be required to maintain immunizations as per the PEG	Limited Intake Fall (Sep)	\$63,656.81 86 credits
Brewing & Brewery Operations L	Faculty of Science & Horticulture	» Undergraduate English Proficiency Requirement » Graduation from high school (secondary school) <i>or</i> completion of 24 or more undergraduate-level credits with a minimum cumulative GPA of 2.0 » Portfolio Review » A minimum of 19 years of age by the first day of classes » Chemistry 11 (C+) or equivalent and Level E1 of the Math Alternatives Table <i>or</i> Recommendation by the Admissions Selection Committee	Limited Intake Fall (Sep)	\$45,908.57 62 credits
Computer Aided Design and Drafting T co	Faculty of Science & Horticulture	» Undergraduate English Proficiency Requirement » Graduation from high school (secondary school) <i>or</i> completion of 24 or more undergraduate-level credits with a minimum cumulative GPA of 2.0 » Level E1 of the Math Alternatives Table or successful placement by the CADD Math Placement Test at a minimum of 60% » CADD information session <i>or</i> interview with CADD department representative. Other program recommendations: Level E1 of the Math Alternative Table	Limited Intake Fall (Sep) Spring (Jan) Summer (May)	\$48,127.10 credits

Program Details *continued*

KPU Campuses **C** Civic Plaza » **L** Langley » **R** Richmond
S Surrey » **T** Tech (Cloverdale) » **O** Online

Additional Program Components

CO Co-op offered / **H** Honours program offered

DIPLOMAS 2 YEARS *continued*

PROGRAM	FACULTY	REQUIREMENTS	INTAKE/ START DATES	ESTIMATED TUITION & FEES
Environmental Protection Technology L CO	Faculty of Science & Horticulture	» Undergraduate English Proficiency Requirement » Graduation from high school (secondary school) <i>or</i> completion of 24 or more undergraduate-level credits with a minimum cumulative GPA of 2.0 » Level E1 of the Math Alternatives Table and Chemistry 11 (C+) or equivalent	Limited Intake Fall (Sep)	\$68,093.87 92 credits
Science L R S	Faculty of Science & Horticulture	» Undergraduate English Proficiency Requirement » Graduation from high school (secondary school) or completion of 24 or more undergraduate-level credits with a minimum cumulative GPA of 2.0 » Other program recommendations: Chemistry 11 (C+) or Chemistry 12 (P) or equivalent • Level C1 of the Math Alternatives Table • Physics 12 (P)	Open Intake Fall (Sep) Spring (Jan) Summer (May)	\$44,429.55 60 credits
Horticulture Technology L	Faculty of Science & Horticulture	» Undergraduate English Proficiency Requirement » Graduation from high school (secondary school) <i>or</i> completion of 24 or more undergraduate-level credits with a minimum cumulative GPA of 2.0 Other program recommendations: Level G1 of the Math Alternatives Table	Open Intake Fall (Sep) Spring (Jan) Summer (May)	\$46,648.08 63 credits
Horticulture Technology, Landscape Horticulture Systems Specialization L	Faculty of Science & Horticulture	» Undergraduate English Proficiency Requirement » Graduation from high school (secondary school) <i>or</i> completion of 24 or more undergraduate-level credits with a minimum cumulative GPA of 2.0 Other program recommendations: Level G1 of the Math Alternatives Table	Open Intake Fall (Sep) Spring (Jan) Summer (May)	\$46,648.08 63 credits
Horticulture Technology, Sustainable Production Horticulture Specialization L	Faculty of Science & Horticulture	» Undergraduate English Proficiency Requirement » Graduation from high school (secondary school) <i>or</i> completion of 24 or more undergraduate-level credits with a minimum cumulative GPA of 2.0 Other program recommendations: Level G1 of the Math Alternatives Table	Open Intake Fall (Sep) Spring (Jan) Summer (May)	\$46,648.08 63 credits
Horticulture Technology, Turf Management Specialization L	Faculty of Science & Horticulture	» Undergraduate English Proficiency Requirement » Graduation from high school (secondary school) <i>or</i> completion of 24 or more undergraduate-level credits with a minimum cumulative GPA of 2.0 Other program recommendations: Level G1 of the Math Alternatives Table	Open Intake Fall (Sep) Spring (Jan) Summer (May)	\$46,648.08 63 credits
Mechatronics and Advanced Manufacturing Technology T	Faculty of Trades & Technology	» Undergraduate English Proficiency Requirement » Graduation from high school (secondary school) <i>or</i> completion of 24 or more undergraduate-level credits with a minimum cumulative GPA of 2.0 » Level E1 of the Math Alternatives Table and successful completion of Physics 11 or equivalent	Limited Intake Fall (Sep)	\$44,429.55 60 credits

CERTIFICATES 1 YEAR

PROGRAM	FACULTY	REQUIREMENTS	INTAKE/ START DATES	ESTIMATED TUITION & FEES
Arts L R S	Faculty of Arts	» Undergraduate English Proficiency Requirement » Graduation from high school (secondary school) <i>or</i> completion of 24 or more undergraduate-level credits with a minimum cumulative GPA of 2.0	Open Intake Fall (Sep) Spring (Jan) Summer (May)	\$22,244.25 30 credits
Criminology L R S	Faculty of Arts	» Undergraduate English Proficiency Requirement » Graduation from high school (secondary school) <i>or</i> completion of 24 or more undergraduate-level credits with a minimum cumulative GPA of 2.0	Open Intake Fall (Sep) Spring (Jan) Summer (May)	\$22,244.25 30 credits
Education Assistant L S	Faculty of Arts	» Undergraduate English Proficiency Requirement » Graduation from high school (secondary school) <i>or</i> completion of 24 or more undergraduate-level credits with a minimum cumulative GPA of 2.0 » Approximately 100 hours of successful experience volunteering or working with children or youth, preferably in schools. Applicants must submit two letters from employers or responsible persons in the community, indicating the hours of experience completed » Information Session Once offer is made: Criminal Record Check issued by the BC Ministry of Public Safety and Solicitor General • Criminal Record Search from the Vulnerable Sector from your country of origin	Limited Intake Fall (Sep)	\$25,202.29 34 credits

PROGRAM	FACULTY	REQUIREMENTS	INTAKE/ START DATES	ESTIMATED TUITION & FEES
Fine Arts S	Faculty of Arts	» Undergraduate English Proficiency Requirement » Graduation from high school (secondary school) <i>or</i> completion of 24 or more undergraduate-level credits with a minimum cumulative GPA of 2.0	Open Intake Fall (Sep) Spring (Jan) Summer (May)	\$22,244.25 30 credits
NGO and Nonprofit Studies L R S	Faculty of Arts	» Undergraduate English Proficiency Requirement » Graduation from high school (secondary school) <i>or</i> completion of 24 or more undergraduate-level credits with a minimum cumulative GPA of 2.0	Open Intake Fall (Sep) Spring (Jan) Summer (May)	\$22,244.25 30 credits
Accounting R S	School of Business	» Undergraduate English Proficiency Requirement » Graduation from high school (secondary school) <i>or</i> completion of 24 or more undergraduate-level credits with a minimum cumulative GPA of 2.0	Open Intake Fall (Sep) Spring (Jan) Summer (May)	\$22,244.25 30 credits
Computer Information Systems S	School of Business	» Undergraduate English Proficiency Requirement » Graduation from high school (secondary school) <i>or</i> completion of 24 or more undergraduate-level credits with a minimum cumulative GPA of 2.0 Other program recommendations: Level E1 of the Math Alternatives Table	Open Intake Fall (Sep) Spring (Jan) Summer (May)	\$22,244.25 30 credits
General Business Studies L R S	School of Business	» Undergraduate English Proficiency Requirement » Graduation from high school (secondary school) <i>or</i> completion of 24 or more undergraduate-level credits with a minimum cumulative GPA of 2.0	Open Intake Fall (Sep) Spring (Jan) Summer (May)	\$22,244.25 30 credits
Legal Administrative Studies S	School of Business	» Undergraduate English Proficiency Requirement » Graduation from high school (secondary school) <i>or</i> completion of 24 or more undergraduate-level credits with a minimum cumulative GPA of 2.0 Other program recommendations: Basic keyboarding skills	Limited Intake Fall (Sep)	\$24,462.78 33 credits
Foundations in Design R	Wilson School of Design	» Undergraduate English Proficiency Requirement » Graduation from high school (secondary school) <i>or</i> completion of 24 or more undergraduate-level credits with a minimum cumulative GPA of 2.0 » Portfolio Review and reflective written statement	Limited Intake Fall (Sep)	\$22,244.25 30 credits
Computer Aided Design & Drafting T	Faculty of Science & Horticulture	» Undergraduate English Proficiency Requirement » Graduation from high school (secondary school) or completion of 24 or more undergraduate-level credits with a minimum cumulative GPA of 2.0 » Level E1 of the Math Alternatives Table or successful placement by the CADD Math Placement Test at a minimum of 60% » Online CADD information session or interview with a CADD department representative	Limited Intake Fall (Sep) Spring (Jan) Summer (May)	\$23,723.27 32 credits
Engineering First-Year R S	Faculty of Science & Horticulture	» Undergraduate English Proficiency Requirement » Graduation from high school (secondary school) <i>or</i> completion of 24 or more undergraduate-level credits with a minimum cumulative GPA of 2.0 » Level A1 of the Math Alternatives Table and Physics 12 (C) or equivalent and Chemistry 12 (C+) or equivalent	Limited Intake Fall (Sep)	\$29,639.35 40 credits
Appliance Servicing (Vocational) T	Faculty of Trades & Technology	» English 10 (C) or equivalent or KPU's Vocational Trades English Assessment Part II with a minimum score of 50% » Math 10 (C) or equivalent or KPU's Vocational Trades Mathematics Assessment with a minimum score of 20% » Interview by an instructor (Note: admission for international applicants requires approval of the Dean)	Limited Intake Varies	\$25,202.29 34 credits
Mechatronics & Advanced Manufacturing Technology T	Faculty of Trades & Technology	» Undergraduate English Proficiency Requirement » Graduation from high school (secondary school) <i>or</i> completion of 24 or more undergraduate-level credits with a minimum cumulative GPA of 2.0 » Level E1 of the Math Alternatives Table and successful completion of Physics 11 or equivalent	Limited Intake Fall (Sep)	\$21,808.45 30 credits


All program details, requirements, and tuition costs are approximate and subject to change. For the most up-to-date information about programs and courses, visit kpu.ca/calendar.



Financing your *future*

A KPU education is a competitive and valuable investment that will reward you throughout your life. And no matter your financial situation, KPU has opportunities like scholarships, co-op, and work study, to help you make it happen. Plus, KPU offers some of the most economical university tuition rates you'll find anywhere in Canada.

SAMPLE FIRST YEAR COSTS




**\$14,432 -
\$23,333**

Tuition and Student Fees

For a full-time course load of 9-15 credits per semester

+




\$750+

Learning Materials

Including course materials, school supplies, and other course related fees

+



\$14,000+

Living Costs

Including housing, utilities, food, health insurance, transportation, personal expenses, and more

Credits Taken	Tuition & Fees ¹		KSA Fees		Other Fees ²		Textbooks & Course Supplies ³		Other Living Costs ⁴		Total Cost
	TERM 1	TERM 2	TERM 1	TERM 2	TERM 1	TERM 2	TERM 1	TERM 2	TERM 1	TERM 2	
9	\$6,592.77	\$6,592.77	\$108.51	\$108.51	\$615.55	\$414.70	\$375	\$375	\$7,300	\$7,300	\$29,782.81
12	\$8,790.36	\$8,790.36	\$139.41	\$139.41	\$615.55	\$414.70	\$500	\$500	\$7,300	\$7,300	\$34,489.79
15	\$10,987.95	\$10,987.95	\$163.65	\$163.65	\$615.55	\$414.70	\$625	\$625	\$7,300	\$7,300	\$39,183.45

¹ University levied student fees. ² KSA Extended Health Plan; KSA Dental Plan; guard.me medical insurance; MultiPass. ³ Costs will vary based on the courses taken. Some courses may have zero textbook costs, while others will require both textbooks and additional course supplies. ⁴ Housing and utilities; groceries; personal expenses; cellphone; BC MSP; food; rent


These are estimates based on the KPU 2021-2022 University Calendar. Rates are listed in Canadian dollars. For full details and other costs, visit kpu.ca/international/future-students/cost

Curious about how much your entire program will cost? See Program Details pages 24 - 31.

kpu.ca/tuition_estimator

Scholarships and *awards*

Starting university in a new country is a major decision. It deserves a major scholarship. That's where KPU can help.



Each year we provide almost **\$2 million** IN SCHOLARSHIPS AND AWARDS



\$265,000 IN SCHOLARSHIPS AND AWARDS is reserved EVERY YEAR for students beginning their studies, including \$20,000 ENTRANCE SCHOLARSHIPS



Applying is easy. **1 application** covers you for ALL AWARDS AND SCHOLARSHIPS OFFERED

PRESIDENT'S ENTRANCE SCHOLARSHIPS

6x \$20,000

MERIT ENTRANCE SCHOLARSHIPS

18x \$5,000

Fall 2022 Entrance Scholarships and Donor-Funded Entrance Awards
Applications open October 1, 2021 | Deadline to apply April 14, 2022

Spring 2023 Entrance Scholarships

Applications open May 1, 2022 | Deadline to apply September 30, 2022

Be sure to apply for additional awards and scholarships throughout your education, too.

WANT TO KNOW WHICH SCHOLARSHIPS YOU'RE ELIGIBLE FOR? CONNECT WITH US!

international@kpu.ca | 1.604.599.2866 | kpu.ca/international

kpu.ca/awards



Zero textbook *costs*

All the knowledge, none of the textbook costs.

What is ZTC?

ZTC stands for Zero Textbook Costs. These are KPU courses that don't require you to spend money on expensive textbooks.

How does it work?

ZTC courses use open education resources, online content, and library materials to save you from having to buy books. Since we launched the ZTC program, our students have **saved over \$6 million** on textbooks!



Did you know you can **SEARCH SPECIFICALLY FOR ZTC COURSES** during your registration?

kpu.ca/ztc

What courses can I take?

Over 850 unique courses are available with no required textbook costs. You can even complete several programs this way.

- » Bachelor of Arts, General Studies
- » Bachelor of Interior Design
- » Associate of Arts, General Studies
- » Associate of Arts, Sociology
- » Adult Graduation Diploma
- » Diploma, General Studies
- » Arts Certificate
- » Foundations in Design Certificate

I'm ready to *apply*



» STEP 1 APPLY ONLINE TO KPU

Start your application to KPU by applying online on Education Planner BC and paying the \$120 application fee

kpu.ca/apply



» STEP 2 SUBMIT SUPPORTING DOCUMENTS

Once you've applied online, you'll receive your Next Steps Letter with instructions on how to access your Online Self-Service Account and submit the supporting documents you need to complete your application.



» STEP 3 ACCEPT YOUR OFFER OF ADMISSION

Your application will be processed after all your supporting documents have been received by KPU, and we'll email you an offer of admission if your application is successful! Accept your offer of admission by paying your confirmation deposit by the deadline indicated.



» STEP 4 GET READY FOR YOUR ARRIVAL!

Apply for your study permit, sign up for orientation, register for classes, and get ready to start your classes at KPU.

Application Timelines

START CLASSES IN
May 2022



SUMMER SEMESTER

Applications open
JUNE 1, 2021

Application deadline
(limited intake programs)
DECEMBER 1, 2021

Application deadline
(open intake programs)
MARCH 1, 2022

START CLASSES IN
September 2022



FALL SEMESTER

Applications open
OCTOBER 1, 2021

Application deadline
(limited intake programs)
MARCH 1, 2022

Application deadline
(open intake programs)
JULY 1, 2022

START CLASSES IN
January 2023



SPRING SEMESTER

Applications open
FEBRUARY 1, 2022

Application deadline
(limited intake programs)
AUGUST 1, 2022

Application deadline
(open intake programs)
NOVEMBER 1, 2022

LEARN MORE
kpu.ca/international/future-students

HAVE A QUESTION ABOUT APPLYING?
kpu.ca/international/contact



12666 72 Avenue Surrey, BC Canada V3W 2M8

International@kpu.ca | 1.604.599.2866    mykpu | @mykpu

kpu.ca/international

