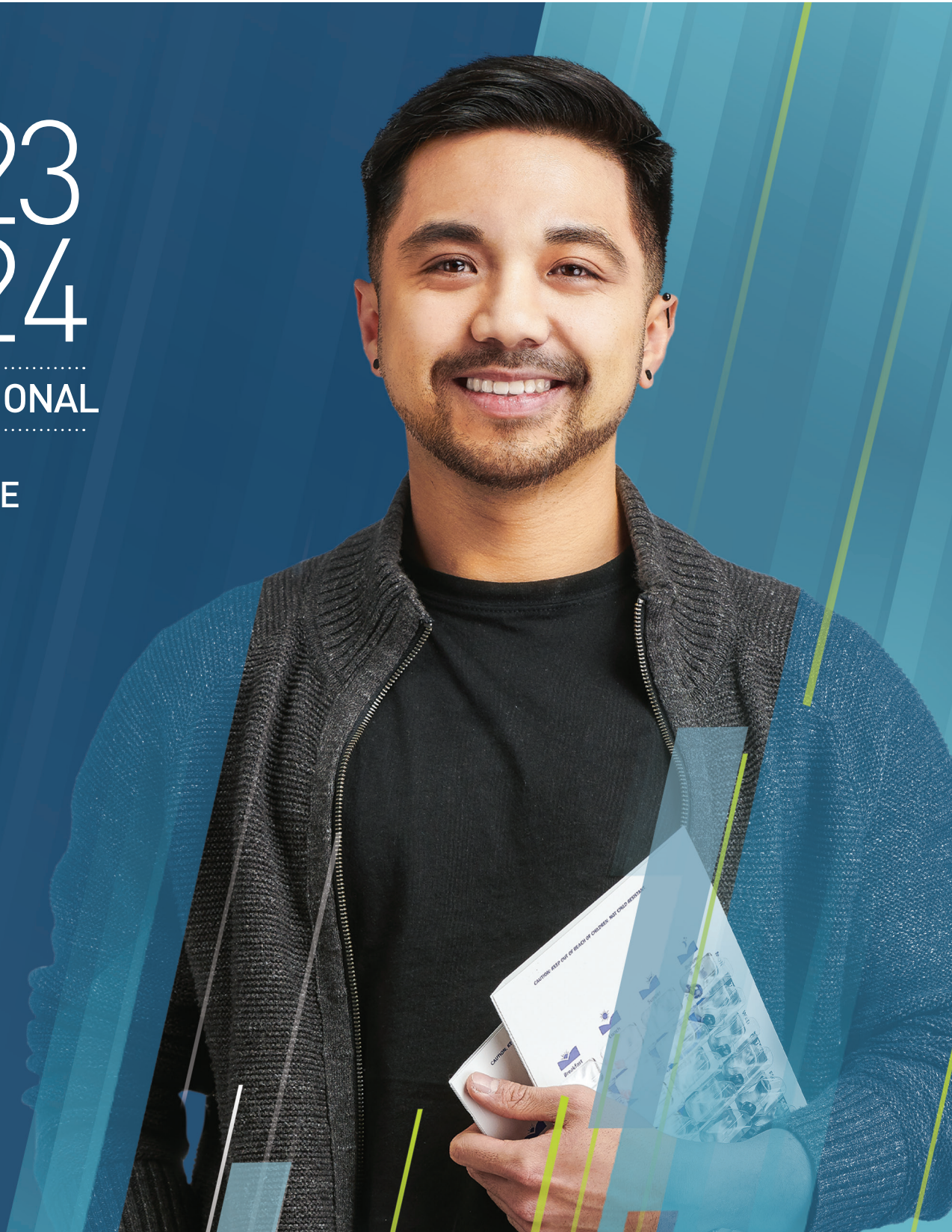




MANITOBA INSTITUTE OF
TRADES & TECHNOLOGY

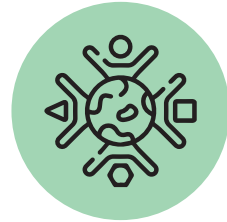
2023
2024

INTERNATIONAL
PROGRAMS
AT A GLANCE



WHY MITT?

Offering more than 30 certificate, diploma, and post-graduate programs, MITT gives you the in-demand skills you need to succeed at any stage of your career. Our industry-expert instructors, work-integrated learning, and robust academic support create a student experience like no other. With employability skills embedded in every program and strong industry partnerships, you'll be connected with employers while you're at MITT and after graduation.



INCLUSIVE ENVIRONMENT

MITT offers a safe and inviting learning environment through small campuses and dedicated cohorts. Students from diverse backgrounds, cultures, and life experiences create community through campus events and student groups.



EXPERIENCED INSTRUCTORS

MITT's instructors are industry experts with years of experience. They share their immense knowledge and provide one-on-one guidance, building your skills and confidence so you are career-ready after graduation.



WORK-INTEGRATED LEARNING

MITT offers immersive learning environments where you will practice your skills in modern simulation labs using state-of-the-art industry tools and equipment. Many programs also include a work practicum experience of up to 18 weeks with a local employer.



CAREER-FOCUSED SUPPORT

MITT is the only college in Manitoba that integrates employability skills training into every program. Our Career and Employment Services team provides the Bridging to Work series that gives you a career toolkit to transition effectively into the workforce.



AFFORDABLE TRAINING

Tuition at MITT is affordable, with payment plans available for qualifying students. Bursaries and scholarships can help cover tuition and living expenses while you study.



EMPLOYED GRADUATES

At MITT, our mission is to get you career-ready. From hands-on training to our Bridging to Work sessions, we prepare you for the workforce today and give you the tools to be ready for the evolving needs of tomorrow. Our method speaks for itself—86% of our graduates say the education they received from MITT qualified them for their current job.

* source: 2022 Inshtrix survey of more than 500 MITT alumni.

MITT BY THE NUMBERS



30+ programs

Certificate, diploma, and post-graduate programs.



4,000+ students

Including secondary, post-secondary, language, and adult learners.



14 locations

In Winnipeg and the surrounding area.



88% currently employed

That's how many recently surveyed alumni said they were currently employed.*

*Results from 2022 Inshtrix survey of more than 500 MITT alumni.



"The education, coupled with my previous experiences and on-campus volunteering, helped me land a job at MITT right after graduation."

- Holly, China, Leadership and Management (2019)



"The people here are very warm and friendly. In my opinion, the quality of life here is much better than the other cities that I have lived in."

- Anukul, Bangladesh, Client Service Specialist (2020)



"MITT has amazing staff, a positive and professional environment, and the best instructors ever!"

- Yaroslavna, Ukraine, Leadership and Management (2019)



YOUR JOURNEY AS A STUDENT

Your student journey at MITT, from application to graduation to starting your career.

START HERE



STEP 1 CHOOSE YOUR PROGRAM:
MITT.CA/PROGRAMS

- > Applied Business
- > Design and Manufacturing Technologies
- > Health Care
- > Human Services
- > Information and Communications Technologies
- > Skilled Trades
- > English Language Training

APPLY ONLINE

STEP 2



STEP 3 OBTAIN YOUR OFFER OF ADMISSION AND PAY THE DEPOSIT TO RECEIVE YOUR LETTER OF ACCEPTANCE

APPLY FOR YOUR STUDY PERMIT AND SUBMIT THE APPROVAL LETTER TO MITT 30 DAYS PRIOR TO PROGRAM START DATE

STEP 4



STEP 5 BEGIN CLASSES AND ENJOY YOUR TIME AT MITT

GRADUATE AND LAND YOUR DREAM JOB!

STEP 6



TO GET THERE



STEP 7 APPLY FOR A POST-GRADUATE WORK PERMIT

MANITOBA AND WINNIPEG

MANITOBA

- > Canada's fifth most populated province
- > More than 1.28 million citizens
- > Affordable cost of living: Rent in Winnipeg, on average, is more than 46 per cent less than Toronto
- > Home to a variety of Indigenous communities
- > Manitoba's information and communication technology (ICT) industry employs more than 9,300 full and part-time workers (2019)

WINNIPEG

- > Population of more than 749,000
- > Culturally diverse with more than 100 languages spoken
- > Listed as one of Time Magazine's "World's Greatest Places" (2021)
- > Most Intelligent Community – Intelligent Community Form (2021)
- > Home to large corporations in industries including aerospace, advanced manufacturing, agribusiness, pharmaceuticals and tech



By plane, Winnipeg is just three hours from Vancouver, two and a half hours from Toronto, and less than two hours from Chicago.

The Canadian Museum of Human Rights

BUDGET CONSIDERATIONS*



SUPPLIES
\$140 to \$620



TEXTBOOKS
\$225 to \$1,750**



TRANSIT
\$85 to \$110 (per month)



HEALTH INSURANCE
\$680 to \$990 (mandatory)



FOOD
\$450 to \$600 (per month)



HOUSING
\$800 to \$1,200 (per month)

* Costs are estimated and may be subject to change.

** For more information, please visit MITT.ca/current-students/textbooks

PROGRAMS	DURATION (all programs are full time)	INTAKES ¹	WORK INTEGRATED LEARNING (WIL) ²	CREDENTIALS	ACADEMIC IELTS REQUIREMENTS ³ MITT accepts other English language proficiency test scores. Please refer to MITT.ca/proficiency for details.	ENGLISH FOR ACADEMIC PURPOSES REQUIREMENTS ³ (MITT English Language Institute)	PROGRAM ENTRANCE REQUIREMENTS ³ Minimum entrance requirement for all post-secondary programs is high school/secondary graduation from a recognized curriculum. Minimum entrance requirement for post-graduate programs is an undergraduate degree or diploma from an accredited institution (2 years of full-time accredited course work may also be considered). Please refer to MITT.ca/admissions for detailed requirements.	Tuition ^{4,7}
APPLIED BUSINESS								
Applied Leadership	1 year (12 months)	Winter	No WIL	Post-Graduate Diploma	6 overall, minimum 5.5 in each band	Level 4	Minimum entrance requirements apply (no program-specific requirements)	\$18,150
Business Administrative Assistant	1 year (10 months)	Fall, Winter	Practicum: 7 weeks	Certificate	6 overall, minimum 5.5 in each band	Level 4	Senior Level Math and First Language Literature (or equivalents)	\$17,300
Business Management	1 year (12 months)	Fall, Winter, Spring	No WIL	Post-Graduate Certificate	6 overall, minimum 5.5 in each band	Level 4	Minimum entrance requirements apply (no program-specific requirements)	\$18,150
Global Supply Chain Management	2 years (16 months)	Fall	No WIL	Post-Graduate Diploma	6.5 overall, minimum 5.5 in each band	Level 5	Diploma or degree in business, commerce or a related discipline. Credits in related course topics or subjects may be considered. Completion of the Business Management program at MITT is also accepted for admission.	\$24,200 ⁷
Human Resources Learning and Development	2 years (16 months)	Spring	See website for updates: MITT.ca/human-resources	Post-Graduate Diploma	6.5 overall, minimum 5.5 in each band	Level 5	Diploma or degree preferably in the humanities, social sciences, business or education. Credits in related course topics or subjects may be considered. Completion of the Business Management program at MITT is also accepted for admission.	\$24,200 ⁷
International Business	1 year (12 months)	Fall, Spring	No WIL	Post-Graduate Diploma	6 overall, minimum 5.5 in each band	Level 4	Diploma or degree preferably in preferably in business, commerce or a related discipline. Credits in related course topics or subjects may be considered. Completion of the Business Management program at MITT is also accepted for admission.	\$18,150
DESIGN AND MANUFACTURING TECHNOLOGIES								
CAD Technician	1 year (10 months)	Fall, Winter	Applied Project	Certificate	6 overall, minimum 5.5 in each band	Level 4	Senior Level Math and First Language Literature (or equivalents)	\$17,300
Electronics Technician	1 year (10 months)	Fall	Practicum: 4 weeks	Certificate	6 overall, minimum 5.5 in each band	Level 4	Senior Level Math and First Language Literature (or equivalents)	\$17,300
Graphic and Print Technician	1 year (10 months)	Fall	Practicum: 4 weeks	Certificate	6 overall, minimum 5.5 in each band	Level 4	Senior Level Math and First Language Literature (or equivalents)	\$17,300
HEALTH CARE								
Health Care Aide and Personal Support Worker	1 year (8 months)	Fall, Winter	Practicum: 8 weeks	Certificate	6.5 overall, minimum 6 in each band (only IELTS accepted)	N/A	Senior Level Math, First Language Literature, and Biology (or equivalents)	\$13,400
Medical Office Assistant	1 year (10 months)	Fall, Winter	Practicum: 7 weeks	Certificate	6.5 overall, minimum 5.5 in each band	Level 5	Senior Level Math and First Language Literature (or equivalents)	\$17,300
Pharmacy Technician	2 years (20 months)	Fall	Practicums: Year 1: 2 weeks Year 2: 11 weeks	Diploma	Refer to current language standards at napra.ca	N/A	Senior Level Math and First Language Literature, Biology and Chemistry (or equivalents) with a minimum grade of 60 per cent in each	\$38,500 ⁷
Rehabilitation Assistant	1 year (12 months)	Fall	Practicum: 12 weeks	Certificate	6.5 overall, minimum 5.5 in each band	Level 5	Senior Level Math, First Language Literature (or equivalents), and one of Biology, Chemistry or Physics	\$17,900
HUMAN SERVICES								
Early Childhood Education	2 years (20 months)	Fall	Practicums: Year 1: 7 weeks Year 2: 14 weeks	Diploma (qualifies for Early Childhood Educator II certification)	6.5 overall, minimum 6 in each band	Level 5	Senior Level Math and First Language Literature (or equivalents) (First Language Literature with a minimum grade of 65 per cent)	\$34,600 ⁷
Hospitality Management	2 years (20 months)	Fall	Practicums: Year 1: 7 weeks Year 2: 14 weeks	Diploma	6 overall, minimum 5.5 in each band	Level 4	Senior Level Math and First Language Literature (or equivalents), as well as 1,000 hours experience in hospitality sector or completion of MITT Hotel and Hospitality Services Certificate	\$34,600 ⁷
Hotel and Hospitality Services	1 year (10 months)	Fall, Winter	Practicum: 7 weeks	Certificate	6 overall, minimum 5.5 in each band	Level 4	Senior Level Math and First Language Literature (or equivalents)	\$17,300
Client Service Specialist	1 year (10 months)	Fall	Practicum: 4 weeks	Certificate	6 overall, minimum 5.5 in each band	Level 4	Senior Level First Language Literature (or equivalents)	\$17,300
Sales and Event Coordinator	1 year (10 months)	Fall (Nov), Spring	Practicum: 4 weeks	Certificate	6 overall, minimum 5.5 in each band	Level 4	Senior Level First Language Literature (or equivalents)	\$17,300
INFORMATION AND COMMUNICATION TECHNOLOGIES								
Network and Systems Administrator ⁶	1 year (12 months)	Fall, Winter, Spring	No WIL	Diploma	6 overall, minimum 5.5 in each band	Level 4	Senior Level Math and First Language Literature (or equivalents), and a third senior academic level course with a minimum grade of 60 per cent in each, and with a minimum 70 per cent average across all three. 55 per cent or higher score on Technology Programs Aptitude Test. (TPAT) (test info available at MITT.ca/softwaredeveloper)	\$18,550
Network and Systems Administrator (Honours) ^{5,6}	1+ year (16 months)	Fall, Winter, Spring	Practicum: 15 weeks	Honours Diploma	6 overall, minimum 5.5 in each band	Level 4	Senior Level Math and First Language Literature (or equivalents), and a third senior academic level course with a minimum grade of 60 per cent in each, and with a minimum 70 per cent average across all three. 55 per cent or higher score on Technology Programs Aptitude Test. (TPAT) (test info available at MITT.ca/softwaredeveloper)	\$20,050 ⁶
Network Security	6 months at MITT 10 months at U of W	Fall, Winter	Practicum: 4 weeks	Joint Diploma with University of Winnipeg	Visit pace.uwinnipegcourses.ca/international-students/programs/network-security-diploma			
Software Developer	1 year (12 months)	Fall, Winter	Practicum: 7 weeks	Diploma	6 overall, minimum 5.5 in each band	Level 4	Senior Level Math and First Language Literature (or equivalents), and a third senior academic level course with a minimum grade of 60 per cent in each, and with a minimum 70 per cent average across all three. 55 per cent or higher score on Technology Programs Aptitude Test. (TPAT) (test info available at MITT.ca/softwaredeveloper)	\$18,550
SKILLED TRADES								
Automotive Service Technician	1 year (8 months)	Fall, Winter	Practicum: 7 weeks	Certificate (Apprenticeship accredited Level 1)	6 overall, minimum 5.5 in each band	Level 4	Senior Level Math and First Language Literature (or equivalents)	\$17,300
Culinary Arts and Design	1 year (10 months)	Fall, Winter	Practicum: 4 weeks	Certificate (Apprenticeship accredited Level 1)	6 overall, minimum 5.5 in each band	Level 4	Senior Level Math and First Language Literature (or equivalents)	\$17,300
Electrical Applications	1 year (10 months)	Fall, Winter	No WIL	Certificate (Apprenticeship accredited Level 1 and 2)	6 overall, minimum 5.5 in each band	Level 4	Senior Level Math and First Language Literature (or equivalents)	\$17,300
Hairstyling	1 year (12 months)	Fall, Winter	Applied Project	Certificate (Apprenticeship accredited Level 1)	6 overall, minimum 5.5 in each band	Level 4	Senior Level Math and First Language Literature (or equivalents)	\$17,300
Industrial Welding	1 year (10 months)	Fall, Winter	Capstone Project	Certificate (Apprenticeship accredited Level 1)	6 overall, minimum 5.5 in each band	Level 4	Senior Level Math and First Language Literature (or equivalents)	\$6,500

¹INTAKES
Programs may be offered in the day and/or evening. See website for more information: [MITT.ca/programs](https://mitt.ca/programs)

²WORK-INTEGRATED LEARNING
Some programs may have a Work-Integrated Learning component that is not listed here. Please refer to the specific program page at [MITT.ca/programs](https://mitt.ca/programs) for complete details.

³REQUIREMENTS
Some programs may have additional entrance requirements. Please refer to the specific program page at [MITT.ca/programs](https://mitt.ca/programs) for complete details.

Students whose first language is not English or who were educated in a country where English is not the primary language will have to meet English language proficiency requirements. For information, please see [MITT.ca/proficiency](https://mitt.ca/proficiency). MITT also offers English for Academic Purposes classes. For information, please see [MITT.ca/eli](https://mitt.ca/eli).

⁴TUITION
Tuition is subject to change. Amounts presented here do not include additional student fees, textbooks, supply costs, or health insurance.

⁵NETWORK AND SYSTEMS ADMINISTRATOR
NSA is undergoing a review that may result in modifications to program design, duration and curriculum.

⁶NETWORK AND SYSTEM ADMINISTRATOR HONOURS
Total listed includes \$18,550 tuition plus \$1,500 practicum fee.

⁷SECOND YEAR TUITION
Tuition listed for 2-year programs is for both years. Rates listed here are estimates, based on 2023-2024 tuition rates. Fees are subject to change each year; approved rates for 2024-2025 will be available at [MITT.ca/tuition](https://mitt.ca/tuition) in Fall 2023.

LOCATIONS

130 Henlow Bay
Winnipeg, MB R3Y 1G4

7 Fultz Boulevard
Winnipeg, MB R3Y 1G4

1551 Pembina Highway
Winnipeg, MB R3T 2E5

308-765 Main Street
Winnipeg, MB R2W 3N5

English Language Institute
67 Scurfield Boulevard
Winnipeg, MB R3Y 1G4

English Language Centre
609 Erin Street
Winnipeg, MB R3G 2W1

GENERAL INQUIRIES

T 204 989 6500
E internationalrecruitment@mitt.ca

For program information, please visit mitt.ca/programs

HOURS OF OPERATION

Monday to Friday
8:30 a.m. to 4:30 p.m. CST

Connect with us



@MITTcanada
@MITTInternational

Visit MITT.ca/global-team to connect with a representative in your area.

The Manitoba Institute of Trades and Technology acknowledges that it is situated on Treaty 1 territory and the traditional territory of Anishinaabeg, Cree, Dakota, and Dene Peoples, and the homeland of the Metis Nation.



Join our free events

MITT offers regularly facilitated events featuring our programs, staff, and instructors. Join us to connect face-to-face from around the globe and have your questions answered. Subscribe to MITT email using the QR code to receive notifications about our webinars.